

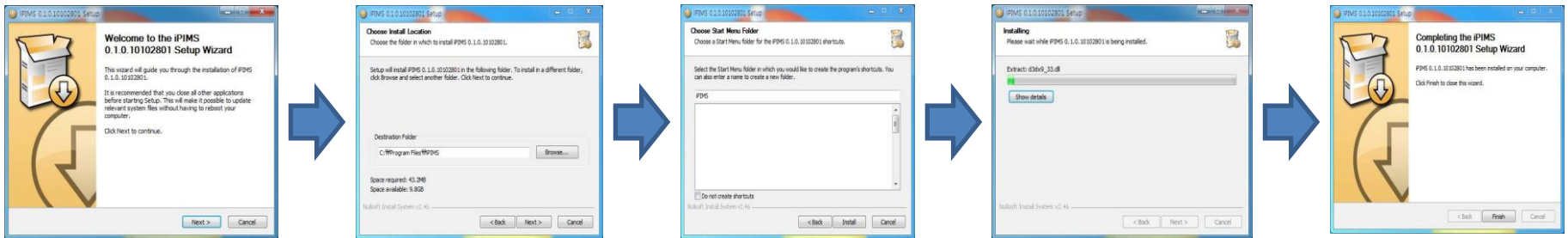
iPIMS (ITX IP Device Management SW) QUICK INSTALLATION GUIDE

1. SW Installation on PC

a. Double Click the installation file



b. Input proper information during install the SW



*select the path to install the SW

* Select whether to create the short cut on Desktop

Minimum System Requirement

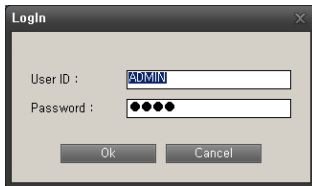
Operating System	XP Professional, Vista, Win7 (only 32bit)
CPU	Core2Duo or Higher
Memory	1GB or Higher
Graphic Card	256MB memory or Higher
HDD	Minimum 100MB Free
S W	DirectX 9.0

iPIMS (ITX IP Device Management SW) QUICK INSTALLATION GUIDE

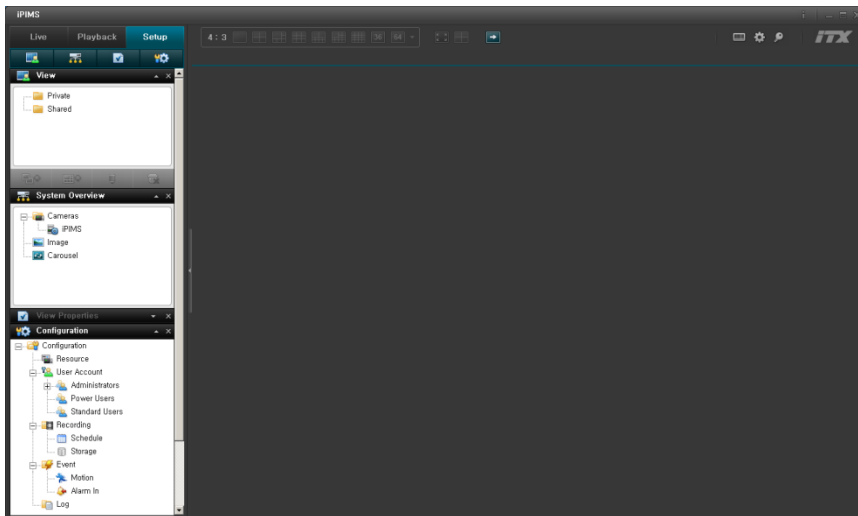
2. Execute the SW
 - a. Double Click the iPIMS shortcut icon on desktop



- b. Input ID and PW (*default is ADMIN/1234)



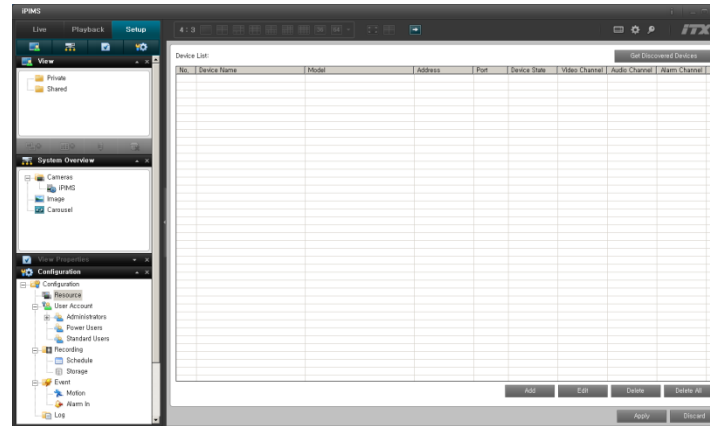
- c. Below is the default Screen of iPIMS SW



iPIMS (ITX IP Device Management SW) QUICK INSTALLATION GUIDE

3. Register Devices

a. Click [Resource] on Left bottom panel.

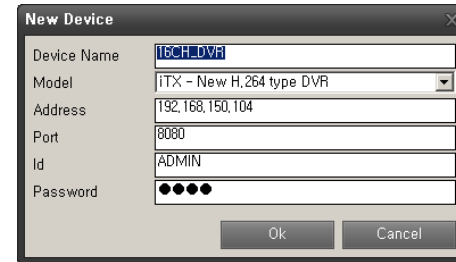


*Device list will be activated

b. Press [ADD] button to register new device.

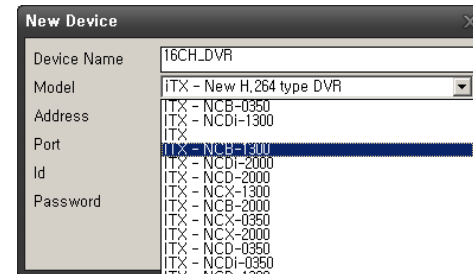
* To Add DVR

- 1) Device Name : Input Device Name
- 2) Model : Select a model
(incase of DVR, select 'iTX-New H.264 type DVR')
- 3) Address : Input IP or URL of DVR.
- 4) Port : input the Web port number that is set on DVR
- 5) ID : Input the ID of DVR
- 6) Password : Input the PW of DVR



* To Add IP CAMERA

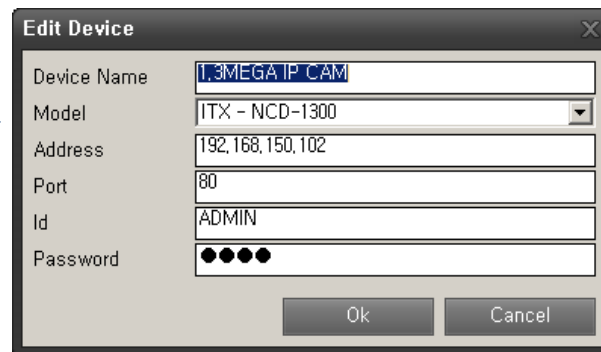
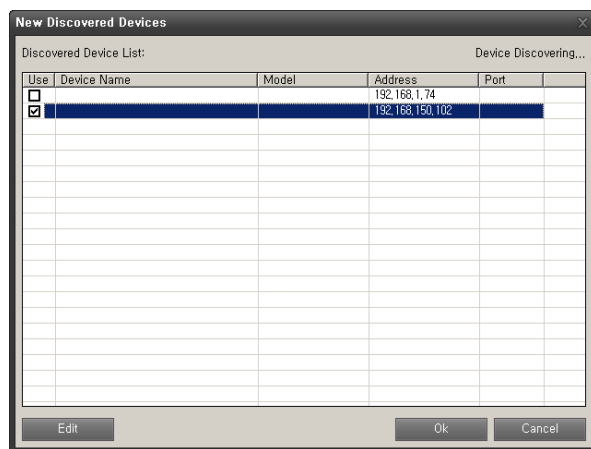
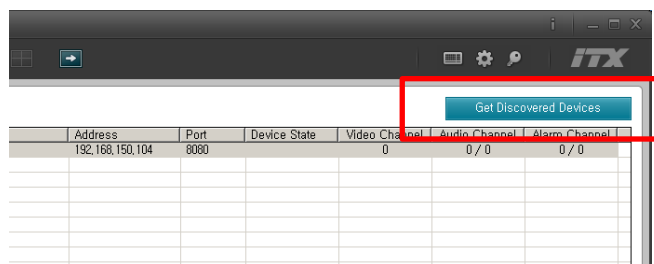
- 1) Device Name : Input Device Name
- 2) Model : Select a model
(incase of IP camera, select proper ITX model name)
- 3) Address : Input IP or URL of DVR.
- 4) Port : input the Web port number that is set on DVR
- 5) ID : Input the ID of DVR
- 6) Password : Input the PW of DVR



iPIMS (ITX IP Device Management SW)

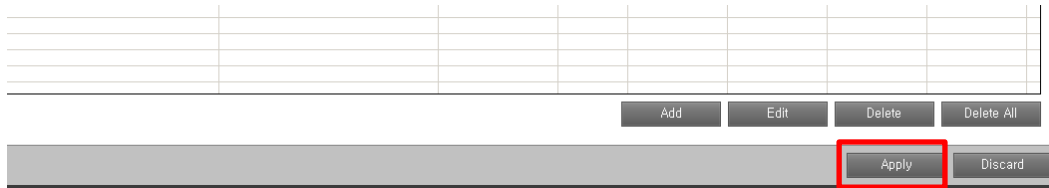
QUICK INSTALLATION GUIDE

- * To Add IP CAMERA with discovery function.
- 1) Press [Get Discovered Devices] button
- this function will be working when IP camera's Upnp activated.
 - 2) select & double click a device on the discover window.
 - 3) Input other information(Device Name, ID and Password)
 - 4) Press [OK] button

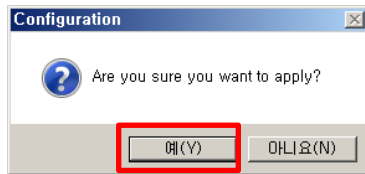


iPIMS (ITX IP Device Management SW) QUICK INSTALLATION GUIDE

c. Press [Apply] button to make a connection with registered Device.



d. Press [Yes] Button to confirm the configuration.



e. Application will make a connection as below

* SW will detect all items(Video, Audio, Alarm) from device when the connection set properly.

Device List:

No.	Device Name	Model	Address	Port	Device State	Video Channel	Audio Channel	Alarm Channel
1	16CH_DVR	iTX - New H.264 type DVR	192.168.150.104	8080	Connected	8	8 / 1	8 / 8
2	1.3MEGA IP CAM	ITX - NCD-1300	192.168.150.102	80	Connected	1	1 / 1	1 / 1

The table shows a list of discovered devices. The columns 'Device State', 'Video Channel', 'Audio Channel', and 'Alarm Channel' are highlighted with a red box. A 'Get Discovered Devices' button is visible in the top right corner of the interface.

iPIMS (ITX IP Device Management SW)

QUICK INSTALLATION GUIDE

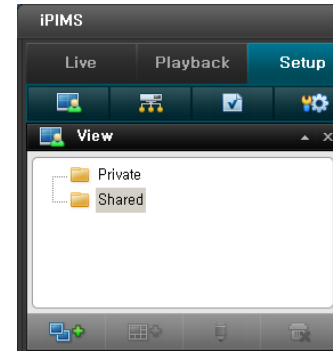
4. Create View

a. select [View] window on Left panel.

Private : view for particular user who create the view.

Shared : View for all user.

b. Select Private or Shared view (explanation will be progressed with Shared mode)



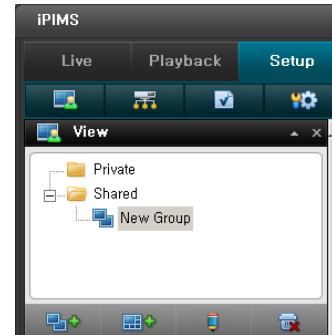
c. Press [Create Group] button to Add a new Group.



d. Input a Group name of view

then next button for create view will be activated

e. Press [Create View] buttons now.



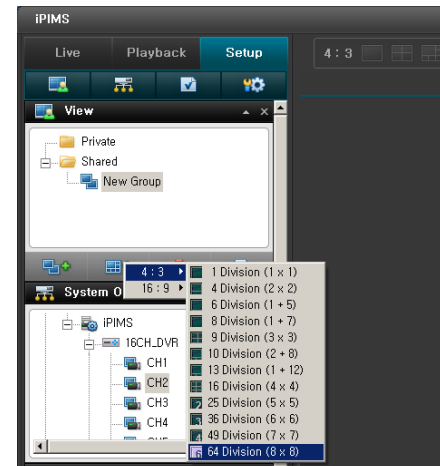
f. Select a Ratio depends on monitor.

* 4 : 3 / 16 : 9 are available.

g. Select a View style

* Maximum 64 division is available.

This means 64 camera can be shown at a screen.

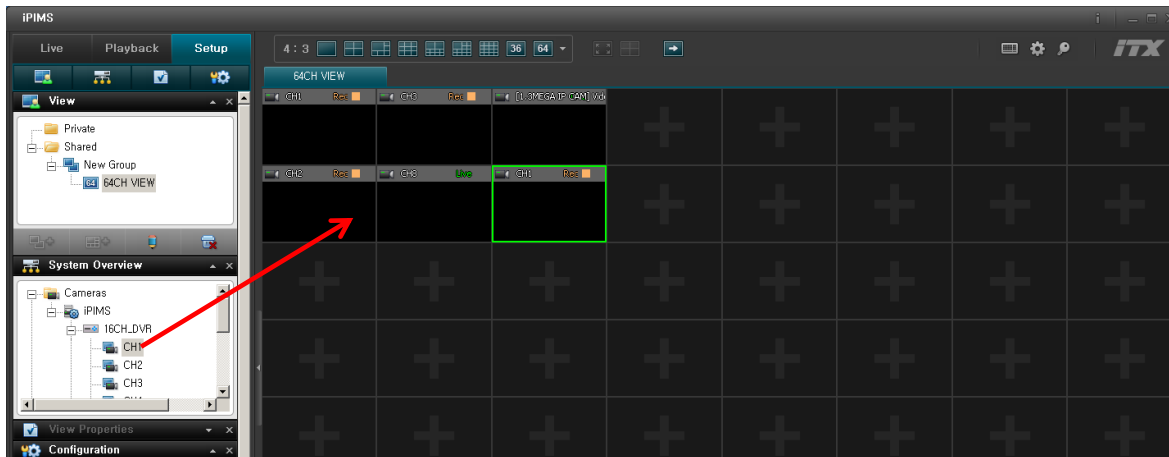


iPIMS (ITX IP Device Management SW) QUICK INSTALLATION GUIDE

h. View format will be displayed at Right panel.



i. Drag cameras from each system on System overview to View format panel.



iPIMS (ITX IP Device Management SW) QUICK INSTALLATION GUIDE

j. Select Live Tab on Left Top.



k. Complete to live surveillance.

iPIMS (ITX IP Device Management SW)

QUICK INSTALLATION GUIDE

5. .Recoding IP camera on PC.

- Select Setup Tab on Left Top.
- Go to configuration Window on Left Panel.
- Select 'Recording' Item.
- Select 'Storage'.
- Set the storage configuration.

Recording Path Setting

Volume Path	Size	
D:\WIP_REC	10,00	

Volume Path:

Volume Size: GB

Time Retention Setting

Use

Time Retention:

Time Sync Mode Setting

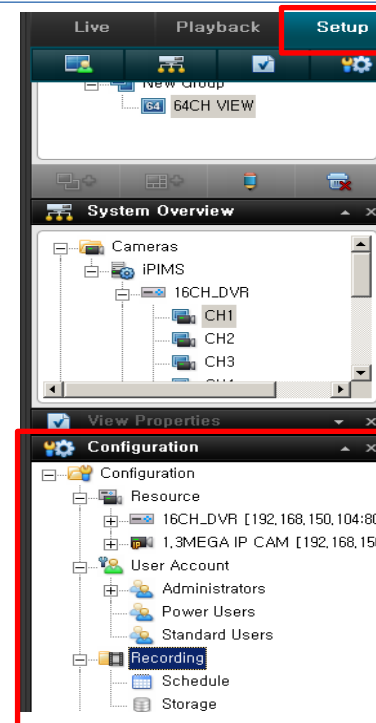
Wait

Delete

Recording Mode Setting

Once

Overwrite



Volume Path : the directory of PC HDD for recording. User can select created directly by [**Browse..**]button.

Volume Size : select a size for directory.

ADD : create the directly on PC.

Delete : Discard created directory for recording.

Time Retention Setting : set the recording time limit if necessary.

Time Sync mode Setting : Delete old data or waiting time when device time and PC time have difference.

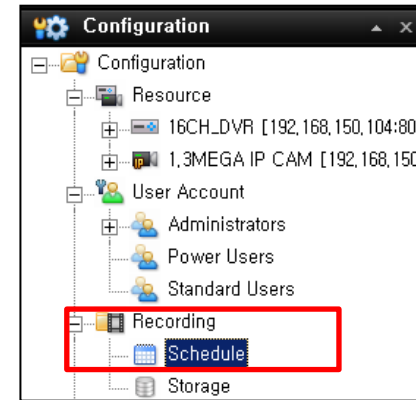
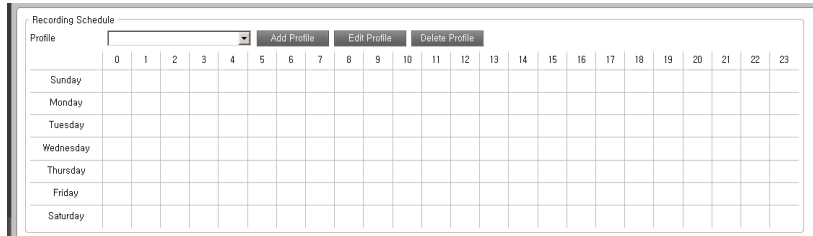
Recording Mode Setting: select a mode for the Recording space full.

- Press [Apply] button after complete the storage configuration.

iPIMS (ITX IP Device Management SW)

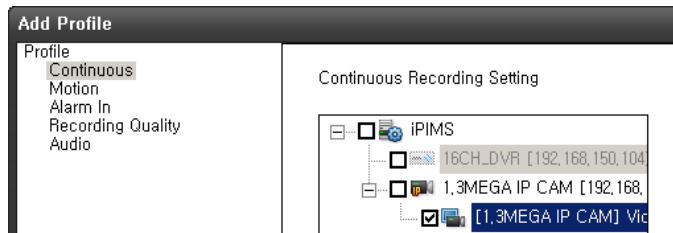
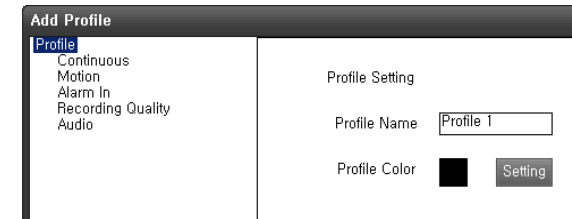
QUICK INSTALLATION GUIDE

- g. Select " Schedule" item on Configuration window.
then the schedule setting Window will appear on Right Panel.



- h. Press [Add Profile] button on Right Panel.
i. Set configuration. For recording profile.

- 1) Set Profile Name and Color
- 2) select recording mode in Continuous or Motion
- 3) Select IP camera devices for recording.
* Only IP camera is available to select and recording

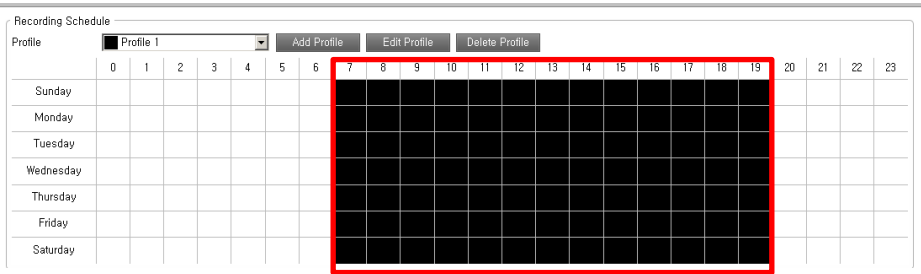


- 4) Set other configuration if necessary (motion/ Alarm Recording)
- 5) press "OK" button to save the configuration of profile.

iPIMS (ITX IP Device Management SW)

QUICK INSTALLATION GUIDE

j. Select time area for recording with selected profile by Mouse Drag & Drop.



k. Press [Apply] button for save the recording configuration.

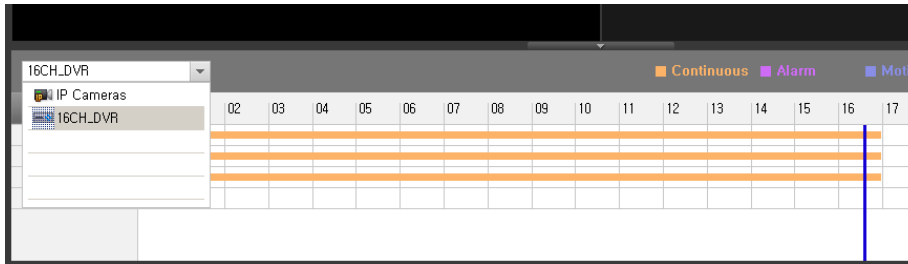
iPIMS (ITX IP Device Management SW) QUICK INSTALLATION GUIDE

6. Playback the recorded data from device or PC.

- Select 'Playback' Tab on Left Top.
- Right side panel will display playback screen.



- Select a device from the time line menu. Indicator will be appeared at time line.



* Mouse left click will expand the time line with detail (up to 5minute interval).

- Select a point that you want to start to playback.
- Press [▶] button on Playback control menu to start.

